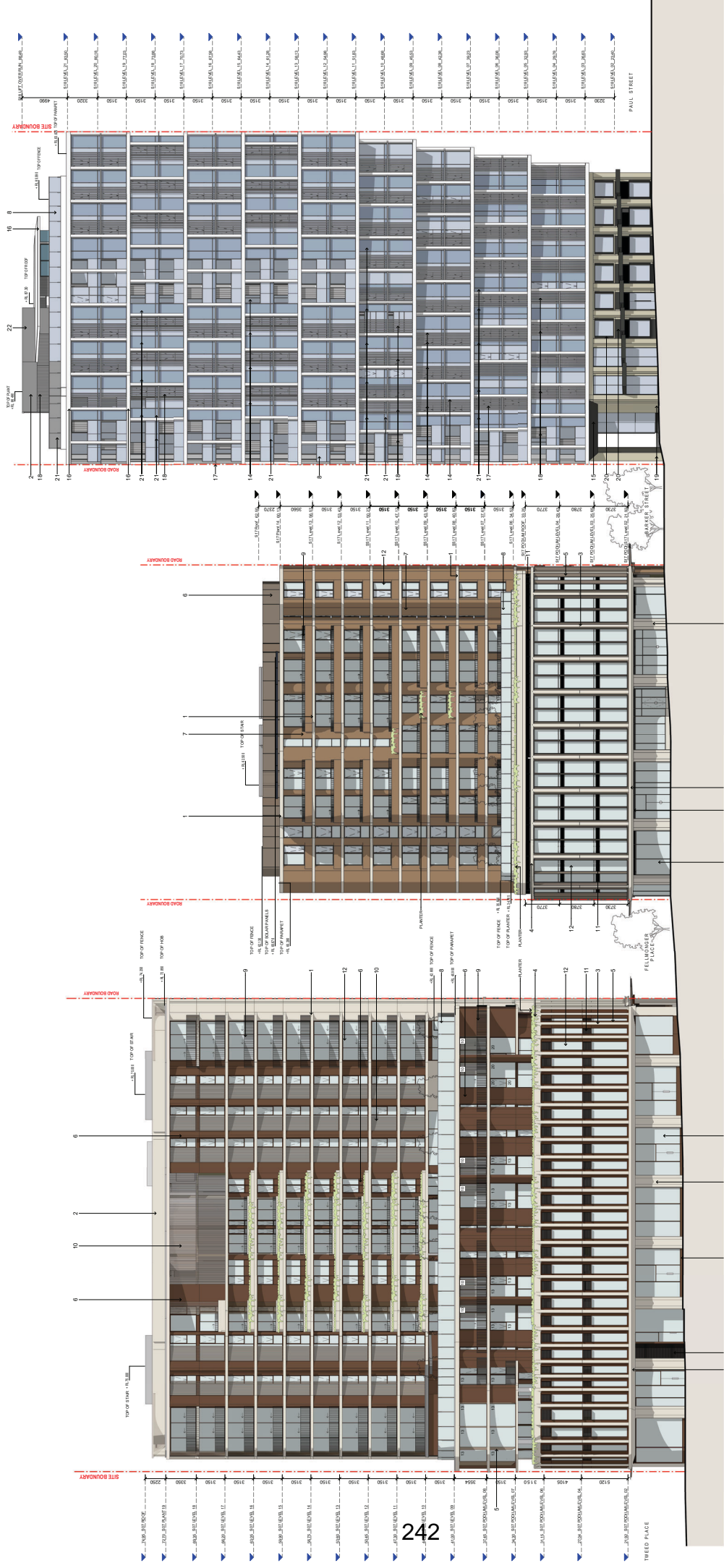


Attachment B2

Selected Drawings

1. Tower partitioning - 1800mm x 2400mm panels with 100mm x 100mm grid
2. Tower partitioning - 1800mm x 2400mm panels with 100mm x 100mm grid
3. Window frame - 1800mm x 2400mm panels with 100mm x 100mm grid
4. Window frame - 1800mm x 2400mm panels with 100mm x 100mm grid
5. Window frame - 1800mm x 2400mm panels with 100mm x 100mm grid
6. Window frame - 1800mm x 2400mm panels with 100mm x 100mm grid
7. Window frame - 1800mm x 2400mm panels with 100mm x 100mm grid
8. Window frame - 1800mm x 2400mm panels with 100mm x 100mm grid
9. Window frame - 1800mm x 2400mm panels with 100mm x 100mm grid
10. Tower facade panels - 1800mm x 2400mm panels with 100mm x 100mm grid
11. Tower facade panels - 1800mm x 2400mm panels with 100mm x 100mm grid
12. Tower facade panels - 1800mm x 2400mm panels with 100mm x 100mm grid
13. Tower facade panels - 1800mm x 2400mm panels with 100mm x 100mm grid
14. Tower facade panels - 1800mm x 2400mm panels with 100mm x 100mm grid
15. Tower facade panels - 1800mm x 2400mm panels with 100mm x 100mm grid
16. Tower facade panels - 1800mm x 2400mm panels with 100mm x 100mm grid
17. Tower facade panels - 1800mm x 2400mm panels with 100mm x 100mm grid
18. Tower facade panels - 1800mm x 2400mm panels with 100mm x 100mm grid
19. Tower facade panels - 1800mm x 2400mm panels with 100mm x 100mm grid
20. Tower facade panels - 1800mm x 2400mm panels with 100mm x 100mm grid
21. Tower facade panels - 1800mm x 2400mm panels with 100mm x 100mm grid
22. Tower facade panels - 1800mm x 2400mm panels with 100mm x 100mm grid
23. Tower facade panels - 1800mm x 2400mm panels with 100mm x 100mm grid



1 South Elevation - Site
1:50

Client: Mirvac Green Square
Project: Green Square - Stage 3
Phase: Planning
Date: 07/11/22
Scale: 1:50 @ A0

Architect: Bates Smart
Engineer: Mirvac
Landscape Architect: Mirvac
Structural Engineer: Mirvac
Mechanical Engineer: Mirvac
Electrical Engineer: Mirvac
Civil Engineer: Mirvac
Traffic Engineer: Mirvac
Planning Consultant: Mirvac

Project: Green Square - Stage 3
Phase: Planning
Date: 07/11/22
Scale: 1:50 @ A0

Client: Mirvac Green Square
Project: Green Square
Date: 07/11/22
Scale: 1:50 @ A0

Client: Mirvac Green Square
Project: Green Square
Date: 07/11/22
Scale: 1:50 @ A0

Client: Mirvac Green Square
Project: Green Square
Date: 07/11/22
Scale: 1:50 @ A0

Client: Mirvac Green Square
Project: Green Square
Date: 07/11/22
Scale: 1:50 @ A0

Client: Mirvac Green Square
Project: Green Square
Date: 07/11/22
Scale: 1:50 @ A0

Client: Mirvac Green Square
Project: Green Square
Date: 07/11/22
Scale: 1:50 @ A0

Client: Mirvac Green Square
Project: Green Square
Date: 07/11/22
Scale: 1:50 @ A0

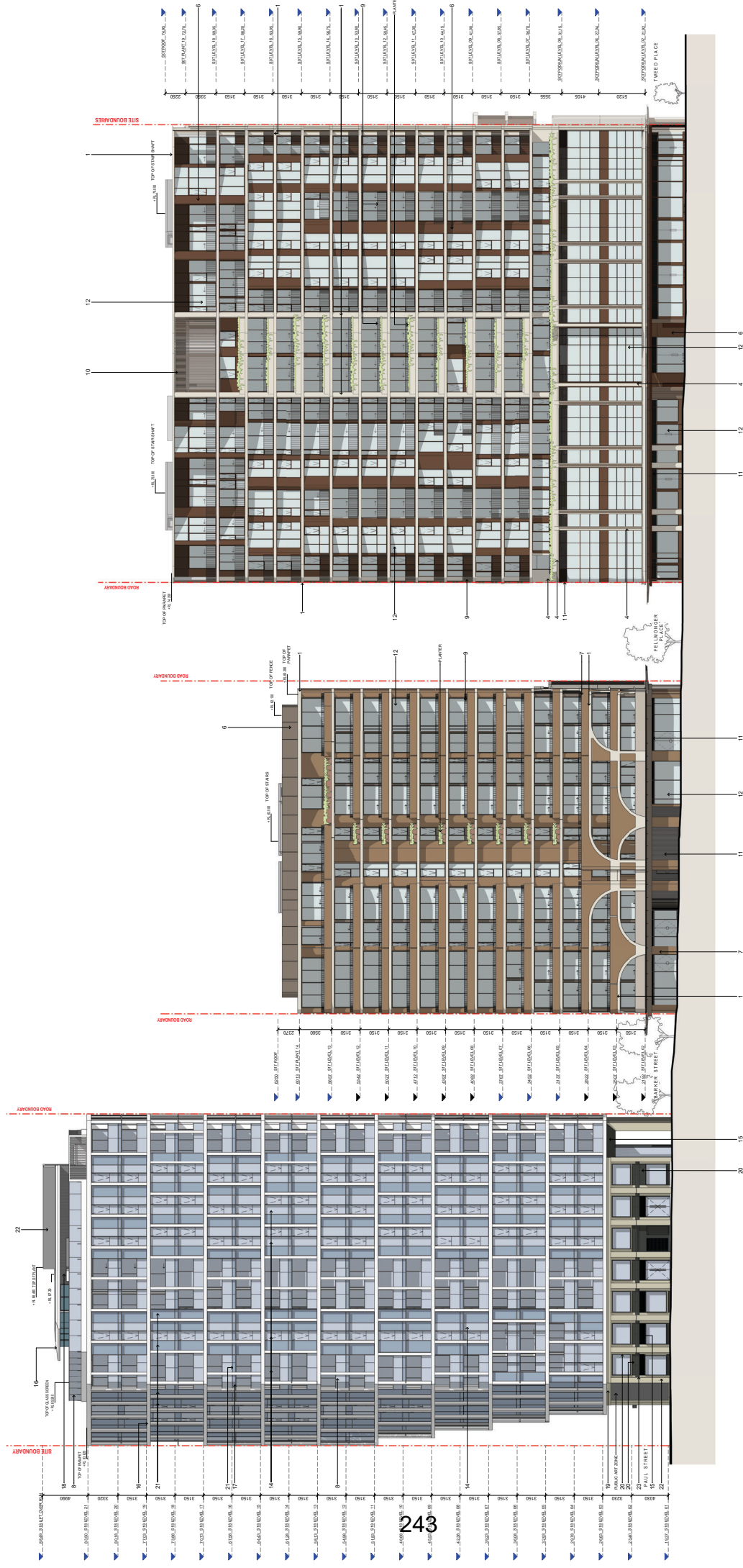


MIRVAC DESIGN
Mirvac Design
Level 20, 200 George Street
Sydney NSW 2000
Phone: +61 2 9230 8000
Email: info@mirvacdesign.com.au
www.mirvacdesign.com.au

BATES SMART
Bates Smart
Level 20, 200 George Street
Sydney NSW 2000
Phone: +61 2 9230 8000
Email: info@bates-smart.com.au
www.bates-smart.com.au

MIRVAC
Mirvac
Level 20, 200 George Street
Sydney NSW 2000
Phone: +61 2 9230 8000
Email: info@mirvac.com.au
www.mirvac.com.au

1. Tower partitioning in common areas
2. Tower partitioning in common areas
3. Tower partitioning in common areas
4. Tower partitioning in common areas
5. Tower partitioning in common areas
6. Tower partitioning in common areas
7. Tower partitioning in common areas
8. Tower partitioning in common areas
9. Tower partitioning in common areas
10. Tower facade window frames
11. Tower facade window frames
12. Tower facade window frames
13. Tower facade window frames
14. Tower facade window frames
15. Tower facade window frames
16. Tower facade window frames
17. Tower facade window frames
18. Tower facade window frames
19. Tower facade window frames
20. Tower facade window frames
21. Tower facade window frames
22. Tower facade window frames
23. Tower facade window frames



1 North Elevation - Site
1:150

Client: Mirvac Green Square
Project: Green Square - Stage 3
Phase: Green Square
Development Application

Architect: BatesSmart
Structural Engineer: JMA Consulting Engineers
Mechanical Engineer: Steve Watson & Partners
Traffic Engineer: Parking and Traffic Consultants
Landscape Architect: Van Der Meer Consulting

Drawn: JH
Checked: JH
Date: 07/11/23
Scale: 1:150 @ A0

Project: Green Square - Stage 3
Phase: Green Square
Development Application

Client: Mirvac Green Square
Project: Green Square
Phase: Green Square
Development Application

Architect: BatesSmart
Structural Engineer: JMA Consulting Engineers
Mechanical Engineer: Steve Watson & Partners
Traffic Engineer: Parking and Traffic Consultants
Landscape Architect: Van Der Meer Consulting

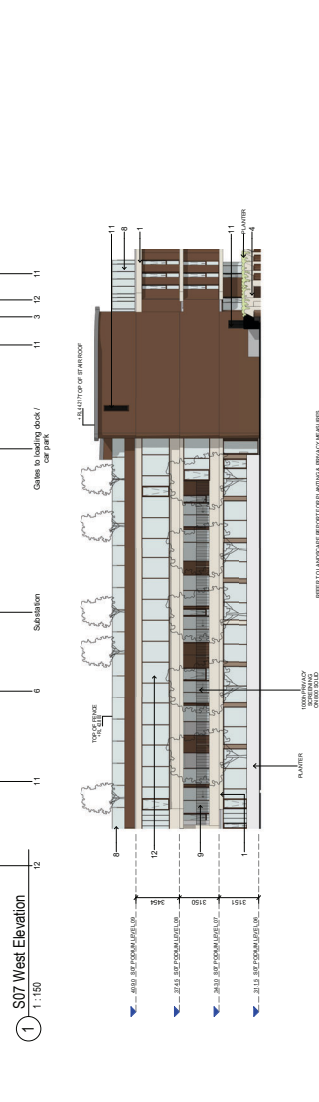
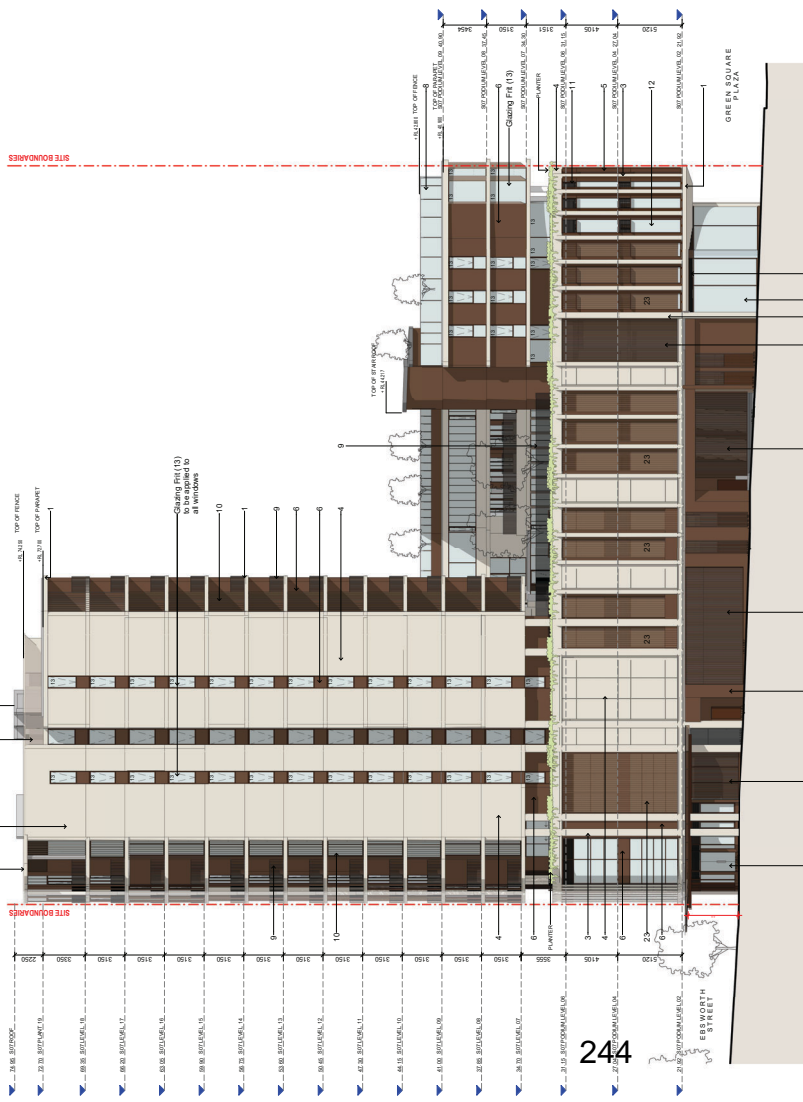
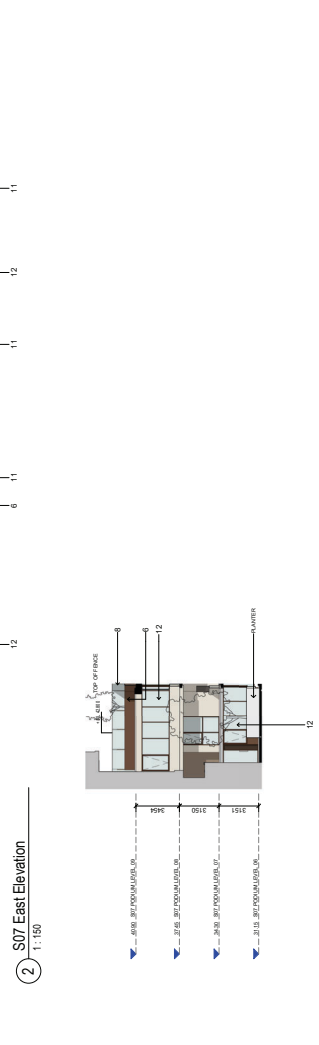
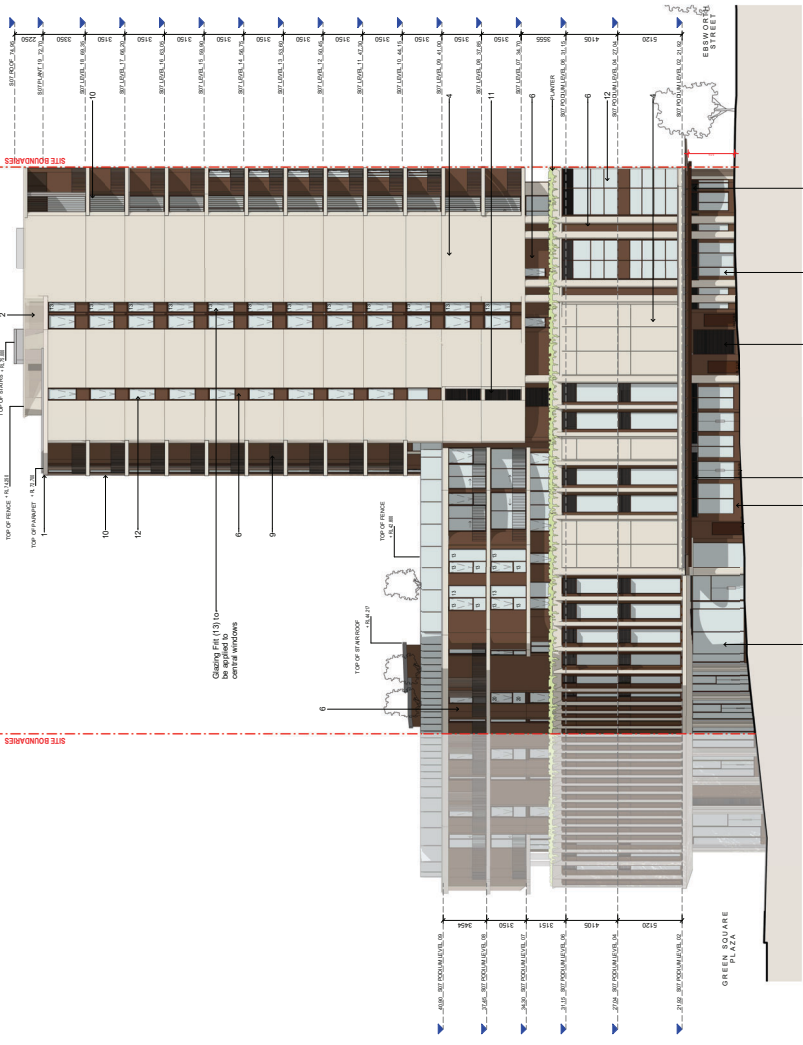
Client: Mirvac
Project: Green Square
Phase: Green Square
Development Application

MIRVAC
MIRVAC DESIGN
BatesSmart
BatesSmart Pty Ltd
Level 20, 200 George St
Sydney NSW 2000
Tel: 02 9230 8000
www.bates-smart.com.au

BATESSMART
BatesSmart Pty Ltd
Level 20, 200 George St
Sydney NSW 2000
Tel: 02 9230 8000
www.bates-smart.com.au

BATESSMART
BatesSmart Pty Ltd
Level 20, 200 George St
Sydney NSW 2000
Tel: 02 9230 8000
www.bates-smart.com.au

1. Tensile fabric panels, stainless steel mesh, aluminum powder-coated in black.
2. Warm grey metal mesh panels.
3. Warm grey metal mesh panels.
4. Warm grey metal mesh panels.
5. Warm grey metal mesh panels.
6. Warm grey metal mesh panels.
7. Warm grey metal mesh panels.
8. Warm grey metal mesh panels.
9. Warm grey metal mesh panels.
10. Warm grey metal mesh panels.
11. Warm grey metal mesh panels.
12. Warm grey metal mesh panels.
13. Clear glass.
14. Clear glass.
15. Clear glass.
16. Clear glass.
17. Clear glass.
18. Clear glass.
19. Clear glass.
20. Clear glass.
21. Clear glass.
22. Clear glass.
23. Clear glass.



1. Tensile fabric panels, stainless steel mesh, aluminum powder-coated in black.
2. Warm grey metal mesh panels.
3. Warm grey metal mesh panels.
4. Warm grey metal mesh panels.
5. Warm grey metal mesh panels.
6. Warm grey metal mesh panels.
7. Warm grey metal mesh panels.
8. Warm grey metal mesh panels.
9. Warm grey metal mesh panels.
10. Warm grey metal mesh panels.
11. Warm grey metal mesh panels.
12. Warm grey metal mesh panels.
13. Clear glass.
14. Clear glass.
15. Clear glass.
16. Clear glass.
17. Clear glass.
18. Clear glass.
19. Clear glass.
20. Clear glass.
21. Clear glass.
22. Clear glass.
23. Clear glass.

Client: Mirvac Green Square
 Project: Green Square - Stage 3
 Drawing: S07 of Elevations
 Date: 07/11/20
 Scale: 1:150 @ A0
 Project No: GP33
 Drawing No: 302

Author: JMK
 Designer: JMK
 Checker: JMK
 Approver: JMK
 Date: 07/11/20
 Scale: 1:150 @ A0

Client: Mirvac Green Square
 Project: Green Square - Stage 3
 Drawing: S07 of Elevations
 Date: 07/11/20
 Scale: 1:150 @ A0

Client: Mirvac Green Square
 Project: Green Square - Stage 3
 Drawing: S07 of Elevations
 Date: 07/11/20
 Scale: 1:150 @ A0

Client: Mirvac Green Square
 Project: Green Square - Stage 3
 Drawing: S07 of Elevations
 Date: 07/11/20
 Scale: 1:150 @ A0

Client: Mirvac Green Square
 Project: Green Square - Stage 3
 Drawing: S07 of Elevations
 Date: 07/11/20
 Scale: 1:150 @ A0

Client: Mirvac Green Square
 Project: Green Square - Stage 3
 Drawing: S07 of Elevations
 Date: 07/11/20
 Scale: 1:150 @ A0

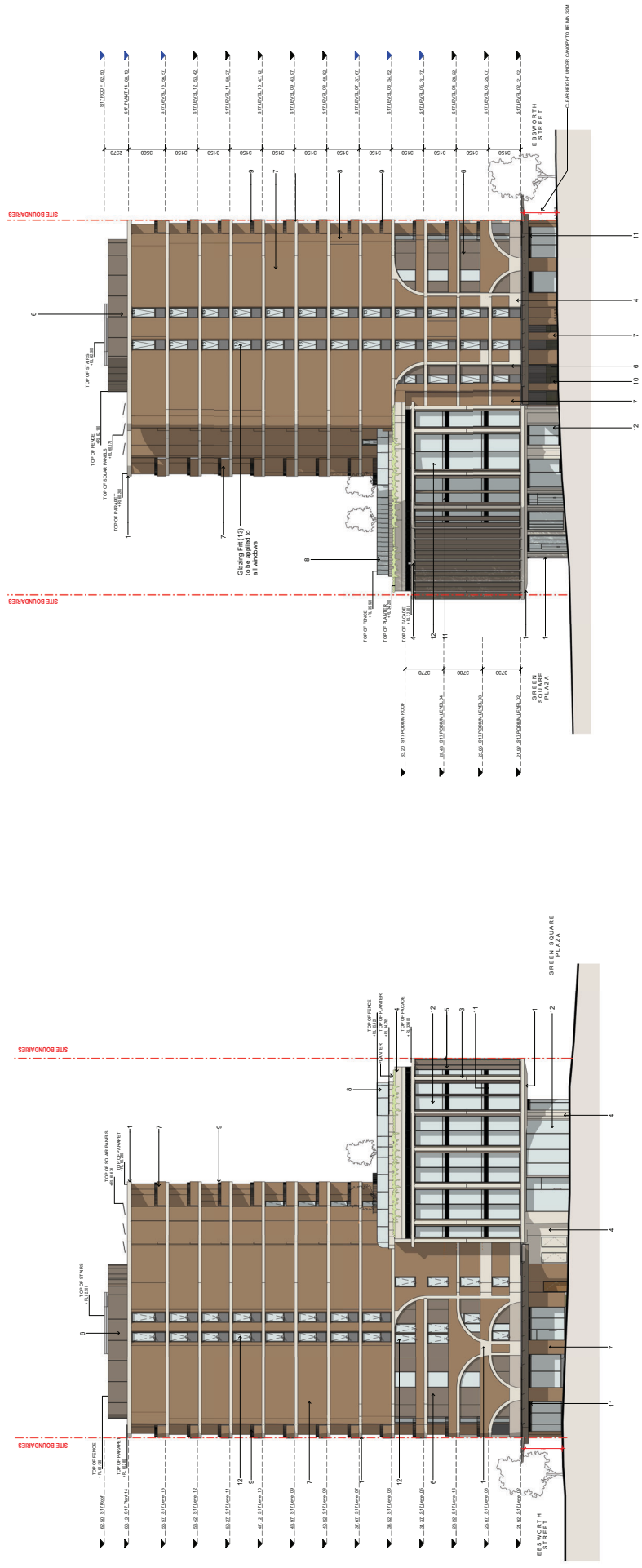
Client: Mirvac Green Square
 Project: Green Square - Stage 3
 Drawing: S07 of Elevations
 Date: 07/11/20
 Scale: 1:150 @ A0

Client: Mirvac Green Square
 Project: Green Square - Stage 3
 Drawing: S07 of Elevations
 Date: 07/11/20
 Scale: 1:150 @ A0

Client: Mirvac Green Square
 Project: Green Square - Stage 3
 Drawing: S07 of Elevations
 Date: 07/11/20
 Scale: 1:150 @ A0



1. Tower facade system - aluminum, stainless steel, glass, and composite panels
2. Tower facade system - aluminum, stainless steel, glass, and composite panels
3. Window frame - aluminum, stainless steel, glass, and composite panels
4. Window frame - aluminum, stainless steel, glass, and composite panels
5. Window frame - aluminum, stainless steel, glass, and composite panels
6. Window frame - aluminum, stainless steel, glass, and composite panels
7. Window frame - aluminum, stainless steel, glass, and composite panels
8. Window frame - aluminum, stainless steel, glass, and composite panels
9. Window frame - aluminum, stainless steel, glass, and composite panels
10. Tower facade system - aluminum, stainless steel, glass, and composite panels
11. Tower facade system - aluminum, stainless steel, glass, and composite panels
12. Tower facade system - aluminum, stainless steel, glass, and composite panels
13. Tower facade system - aluminum, stainless steel, glass, and composite panels
14. Tower facade system - aluminum, stainless steel, glass, and composite panels
15. Tower facade system - aluminum, stainless steel, glass, and composite panels
16. Tower facade system - aluminum, stainless steel, glass, and composite panels
17. Tower facade system - aluminum, stainless steel, glass, and composite panels
18. Tower facade system - aluminum, stainless steel, glass, and composite panels
19. Tower facade system - aluminum, stainless steel, glass, and composite panels
20. Tower facade system - aluminum, stainless steel, glass, and composite panels
21. Tower facade system - aluminum, stainless steel, glass, and composite panels
22. Tower facade system - aluminum, stainless steel, glass, and composite panels
23. Tower facade system - aluminum, stainless steel, glass, and composite panels



① S17 West Elevation
1:150

② S17 East Elevation
1:150

BATESMART™
 Sydney & Melbourne
 2/27 Collins Street Sydney NSW
 Tel: 02 9232 3333
 111 Collins Street Melbourne VIC
 Tel: 03 9232 3333

MIRVAC DESIGN
 Mirvac Design Pty Ltd
 1/111 Collins Street Melbourne VIC
 Tel: 03 9232 3333

mirvac

Client: Mirvac Green Square
Project: Green Square
Phase: URBAN
Address: Green Square
Site: 1:150 @ A0

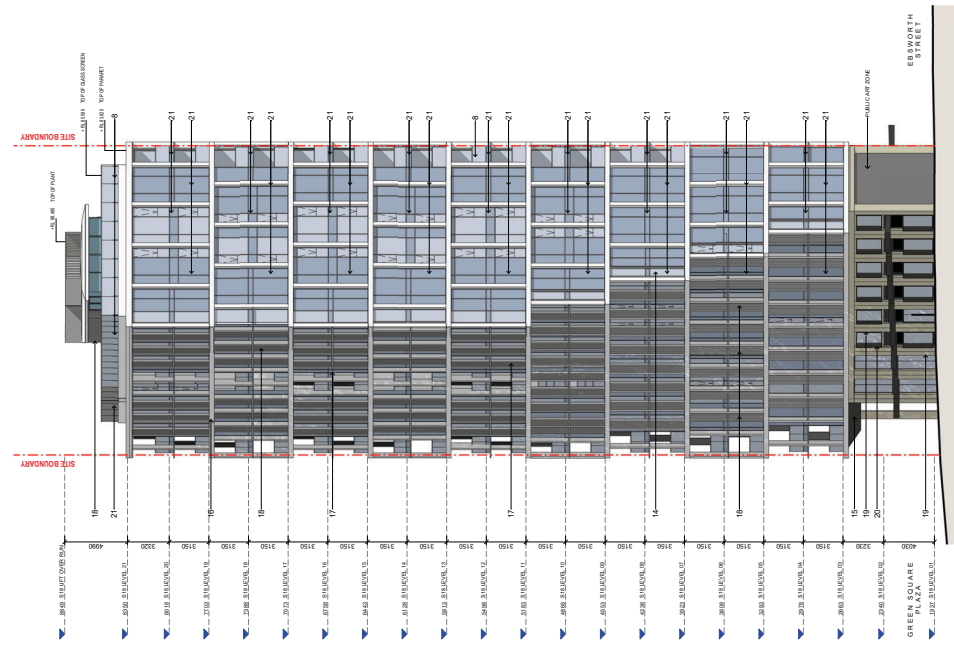
Architect: Batesmart
Engineer: Mirvac
Interior Designer: Mirvac
Structural Engineer: Mirvac
MEP Engineer: Mirvac
Transport Planner: Mirvac
Urban Designer: Mirvac
Quantity Surveyor: Mirvac
Construction Manager: Mirvac

Scale: 1:150 @ A0

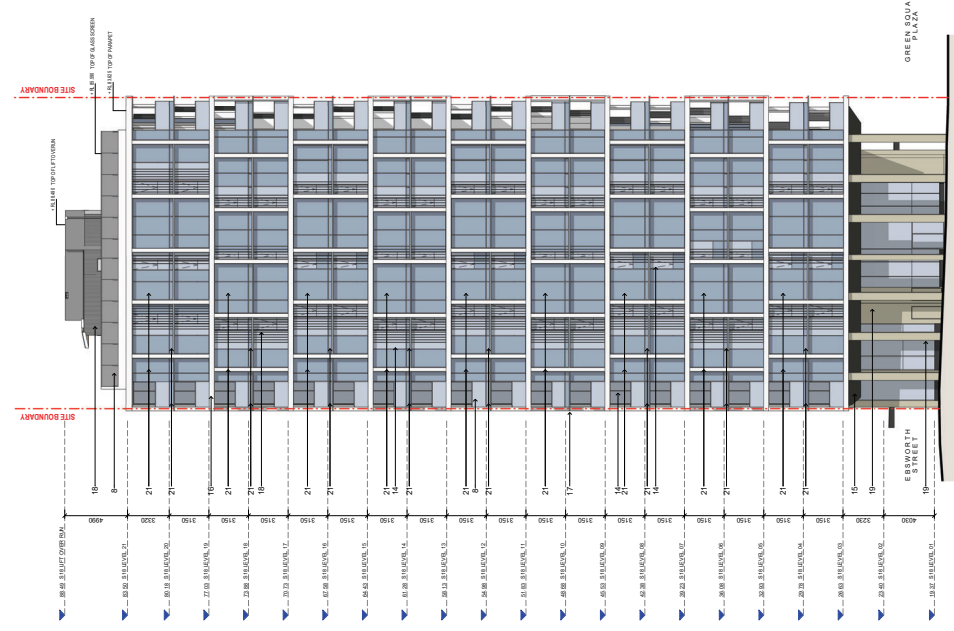
Project Name: Green Square - Stage 3
Client: Mirvac
Project No.: GP33

Drawn: S17 Elevations
Check: S17 Elevations
Date: 07/11/23
Project No.: GP33

1. Tower facade system - aluminum, stainless steel, glass, and composite panels.
2. Tower facade system - aluminum, stainless steel, glass, and composite panels.
3. Window frame - aluminum, stainless steel, and glass.
4. Window frame - aluminum, stainless steel, and glass.
5. Window frame - aluminum, stainless steel, and glass.
6. Window frame - aluminum, stainless steel, and glass.
7. Window frame - aluminum, stainless steel, and glass.
8. Window frame - aluminum, stainless steel, and glass.
9. Window frame - aluminum, stainless steel, and glass.
10. Tower facade system - aluminum, stainless steel, glass, and composite panels.
11. Tower facade system - aluminum, stainless steel, glass, and composite panels.
12. Tower facade system - aluminum, stainless steel, glass, and composite panels.
13. Tower facade system - aluminum, stainless steel, glass, and composite panels.
14. Tower facade system - aluminum, stainless steel, glass, and composite panels.
15. Tower facade system - aluminum, stainless steel, glass, and composite panels.
16. Tower facade system - aluminum, stainless steel, glass, and composite panels.
17. Tower facade system - aluminum, stainless steel, glass, and composite panels.
18. Tower facade system - aluminum, stainless steel, glass, and composite panels.
19. Tower facade system - aluminum, stainless steel, glass, and composite panels.
20. Tower facade system - aluminum, stainless steel, glass, and composite panels.
21. Tower facade system - aluminum, stainless steel, glass, and composite panels.
22. Tower facade system - aluminum, stainless steel, glass, and composite panels.
23. Tower facade system - aluminum, stainless steel, glass, and composite panels.



② S18 East Elevation
1:150



① S18 West Elevation
1:150

Client: Mirvac Green Square
Project: Green Square - Stage 3
Address: Green Square
Date: 07/11/20
Drawn: WJH
Checked: GP33
Scale: 204

Client: Mirvac Green Square
Project: Green Square - Stage 3
Address: Green Square
Date: 07/11/20
Drawn: WJH
Checked: GP33
Scale: 204

Client: Mirvac Green Square
Project: Green Square - Stage 3
Address: Green Square
Date: 07/11/20
Drawn: WJH
Checked: GP33
Scale: 204

Client: Mirvac Green Square
Project: Green Square - Stage 3
Address: Green Square
Date: 07/11/20
Drawn: WJH
Checked: GP33
Scale: 204

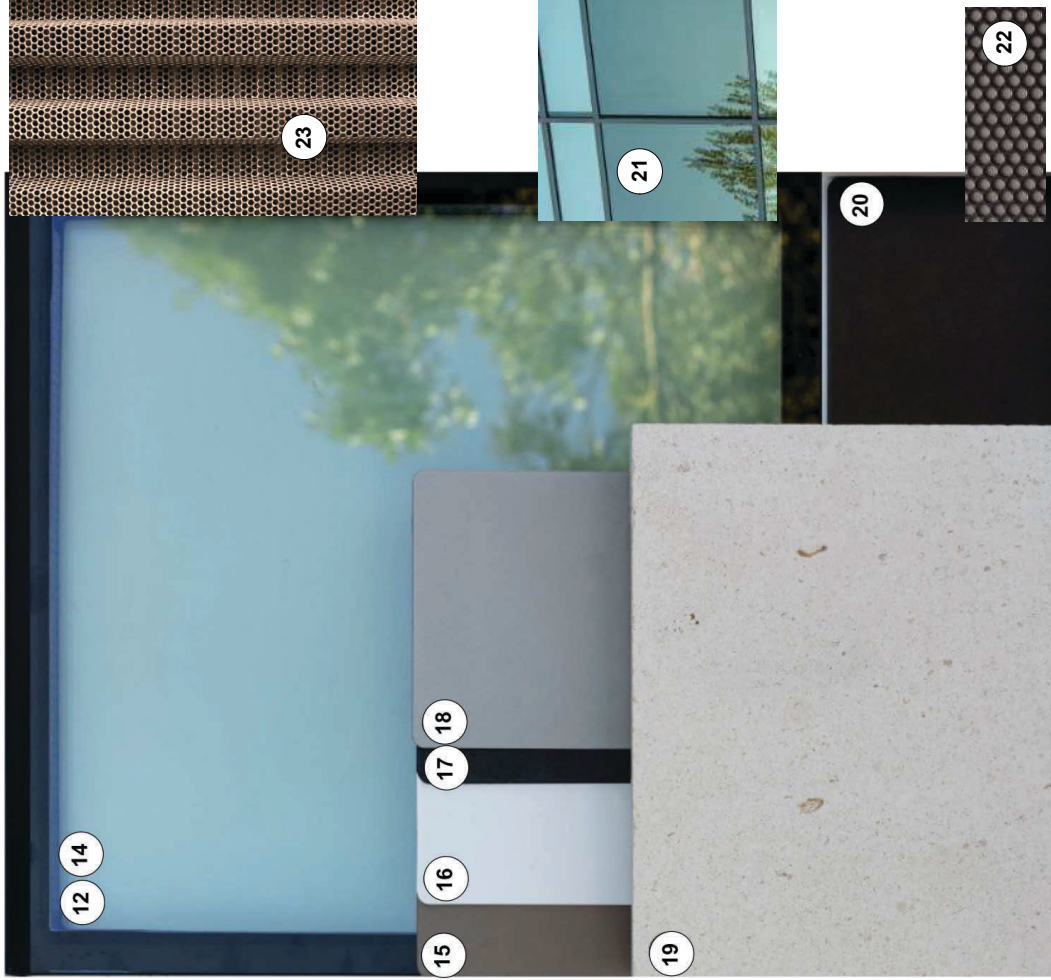
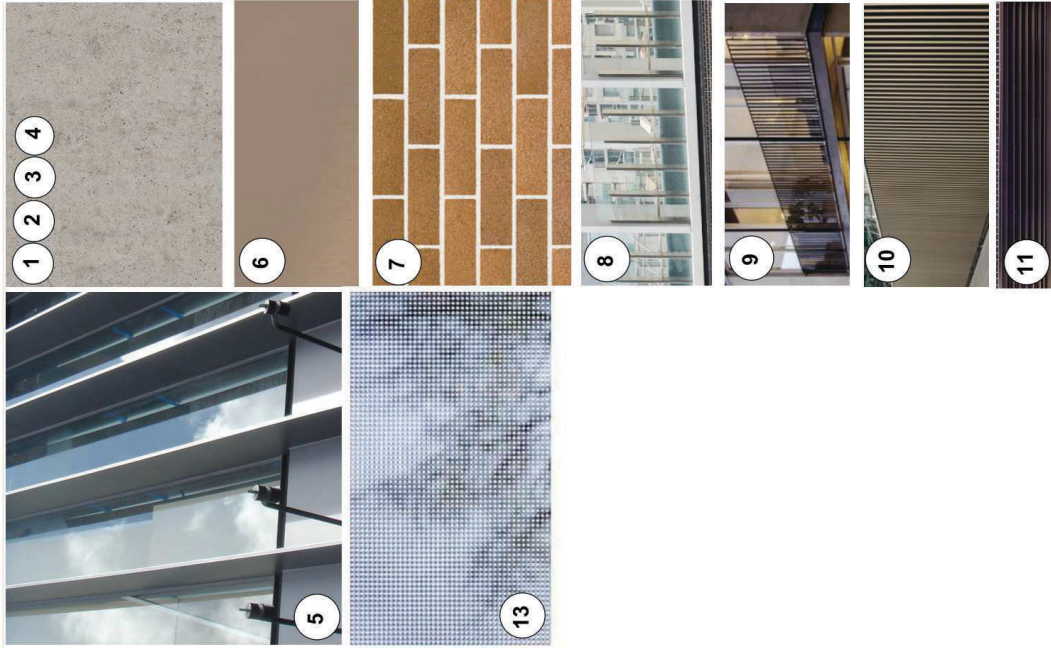
Client: Mirvac Green Square
Project: Green Square - Stage 3
Address: Green Square
Date: 07/11/20
Drawn: WJH
Checked: GP33
Scale: 204

Client: Mirvac Green Square
Project: Green Square - Stage 3
Address: Green Square
Date: 07/11/20
Drawn: WJH
Checked: GP33
Scale: 204

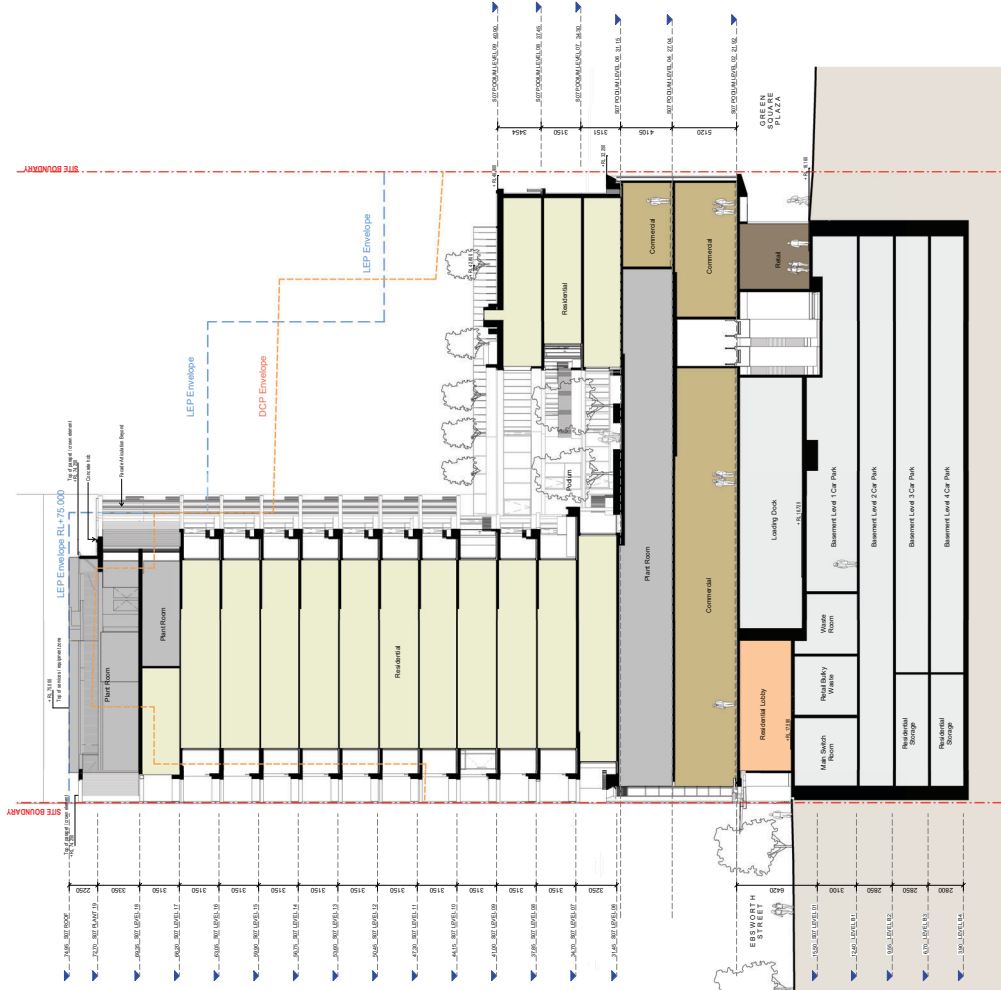
Client: Mirvac Green Square
Project: Green Square - Stage 3
Address: Green Square
Date: 07/11/20
Drawn: WJH
Checked: GP33
Scale: 204

Client: Mirvac Green Square
Project: Green Square - Stage 3
Address: Green Square
Date: 07/11/20
Drawn: WJH
Checked: GP33
Scale: 204

- 1 Texture paint finish on in-situ concrete elements
- 2 Warm-grey texture paint finish (roof screen panels)
- 3 Warm-grey texture paint finish (podium elements)
- 4 Natural finish precast concrete
- 5 Bronze-coloured deep window/door frame
- 6 Perforated aluminium screen, powdercoat finish Bronze
- 7 Brickwork
- 8* Clear glazed balustrade
- 9 Light Bronze coloured metal palisade balustrade
- 10 Bronze coloured metal batten screen
- 11 Bronze coloured metal louvres
- 12* Clear glazing
- 13 Frit glass to windows on Towered, Fellmonger & Banker
- 14* Tinted vision glazing
- 15 Coloured soffit lining: Aluminium powdercoated in Champagne Shimmer
- 16 Tower facade 2-storey glazing: Aluminium powdercoated in Matt White
- 17 Tower facade & balustrade framing: Aluminium powdercoated in Charcoal Pearl Matt
- 18 Tower facade operable louvres, sliding screens & rooftop plant cladding: Aluminium powdercoated in Champagne Pearl matt
- 19 Podium facade stone cladding: sandstone
- 20 Podium facade cladding & expressed window frame: Aluminium powdercoated in Charcoal Pearl Matt
- 21 Colorback spandrel glass - dark tone to match framing
- 22 Perforated aluminium screen, powdercoat finish Charcoal Pearl Matt
- 23 Perforated aluminium screen, powdercoat finish Bronze



* Note: the glass specification is to be in accordance with the SEPP65 Design Statement and the Thermal Performance Specification



1 S07 Section
1:150

Client: Mirvac Green Square
 Project: Green Square
 Date: 24/02/2024
 Rev: 1

Architect: Bates Smart
 Project: Mirvac Green Square
 Date: 24/02/2024
 Rev: 1

Engineer: Mirvac Green Square
 Project: Green Square
 Date: 24/02/2024
 Rev: 1

Structural Engineer: Mirvac Green Square
 Project: Green Square
 Date: 24/02/2024
 Rev: 1

MEP Engineer: Mirvac Green Square
 Project: Green Square
 Date: 24/02/2024
 Rev: 1

Interior Designer: Mirvac Green Square
 Project: Green Square
 Date: 24/02/2024
 Rev: 1

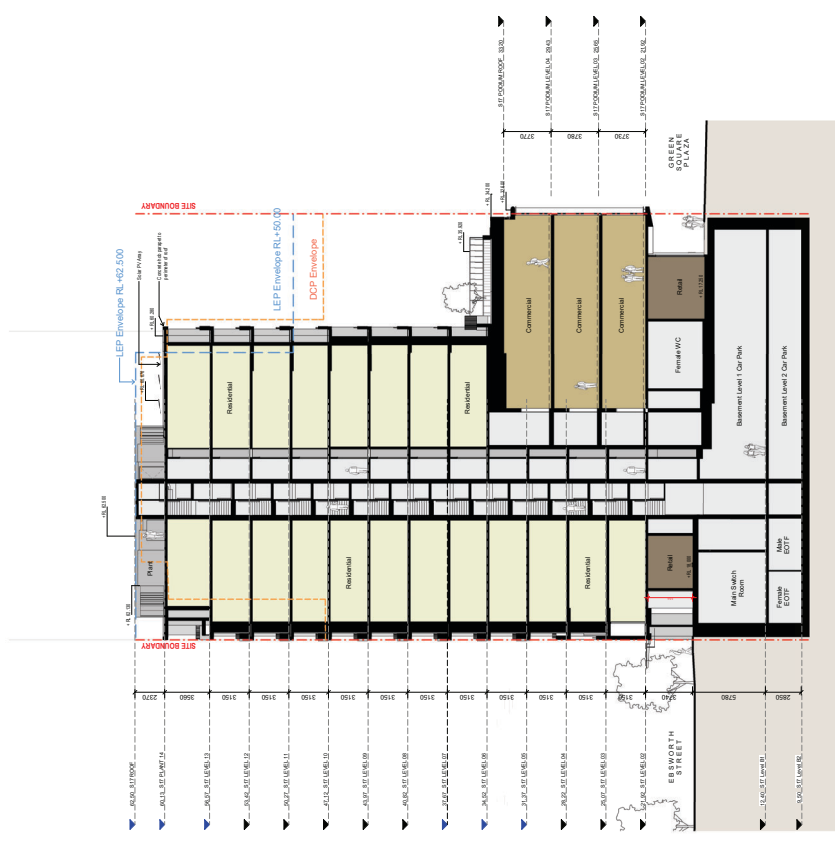
Architectural Drafting: Mirvac Green Square
 Project: Green Square
 Date: 24/02/2024
 Rev: 1

Project: Mirvac Green Square
 Project: Green Square
 Date: 24/02/2024
 Rev: 1

Project: Mirvac Green Square
 Project: Green Square
 Date: 24/02/2024
 Rev: 1

Project: Mirvac Green Square
 Project: Green Square
 Date: 24/02/2024
 Rev: 1

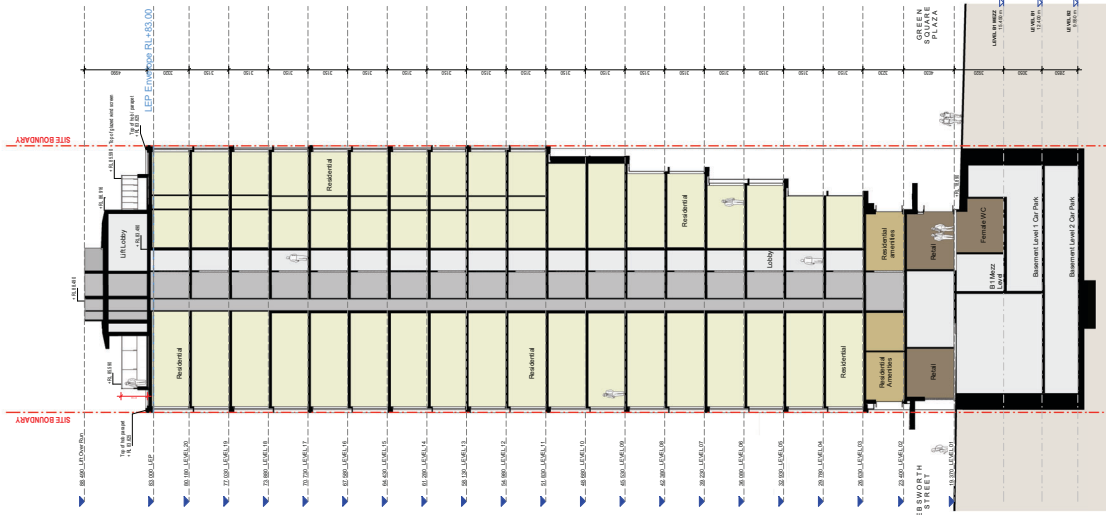
Project: Mirvac Green Square
 Project: Green Square
 Date: 24/02/2024
 Rev: 1



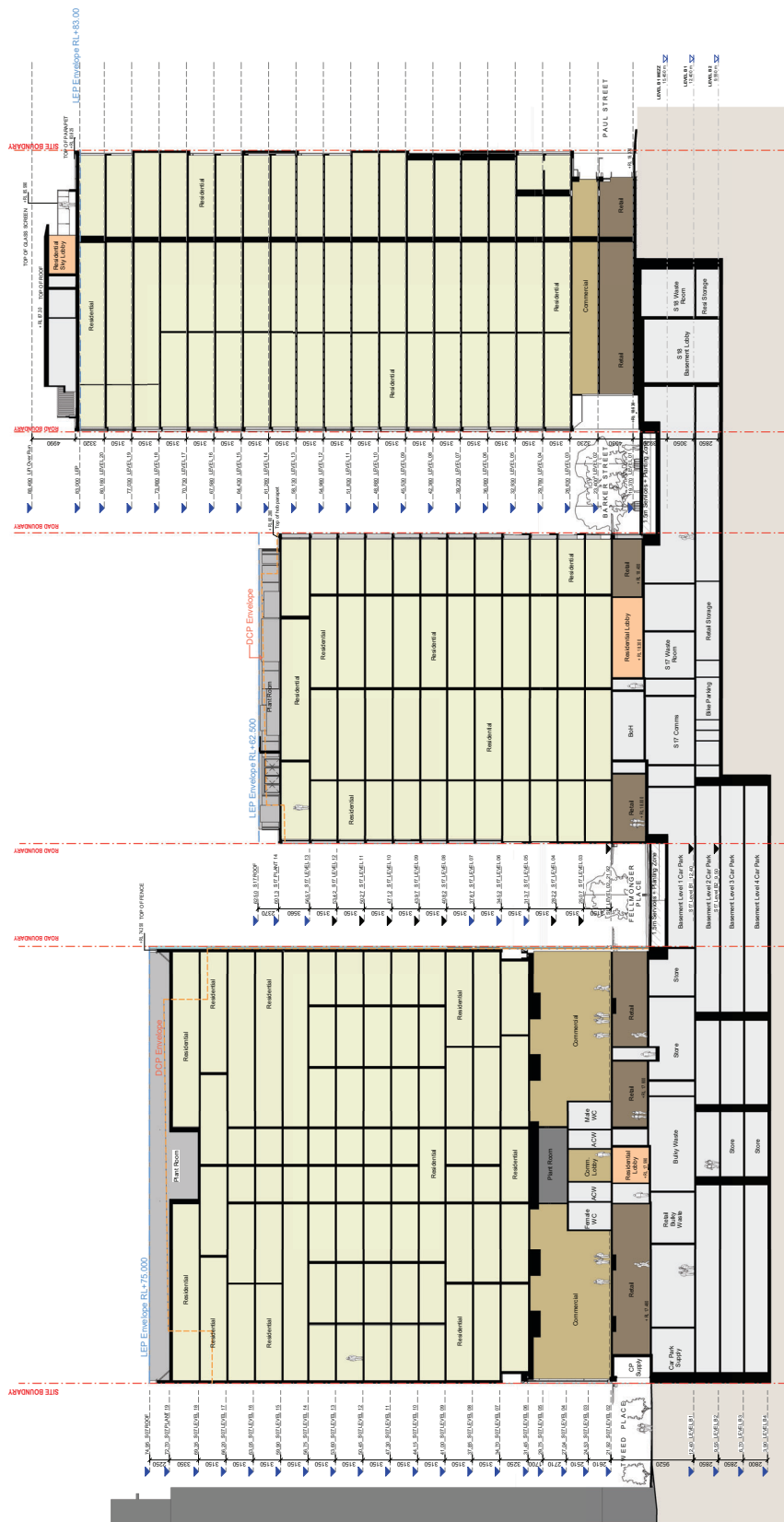
1 S17 section
1:150

Client	Mirvac Green Square Project URBS 1, Victoria Avenue, Avalon NSW 1570	Architectural Engineer	Sherriff & Partners Architects JMA Consulting Engineers JMA Consulting Engineers JMA Consulting Engineers	Landmark	
Rev	Date	For			
1	24/02/2024	Revised Drawing			
Drawn	Checked	Project Manager	Project Engineer	Project Engineer	Project Engineer
Van Die Meer Consulting	Steve Wilson & Partners	Van Die Meer Consulting	Van Die Meer Consulting	Van Die Meer Consulting	Van Die Meer Consulting

Project Name	Green Square - Stage 3	Drawn	Sherriff
Address	Green Square	Checked	Bates
Scale	1:150 @ A0	Project No.	GP33
Date	24/02/2024	Drawn	Sherriff
Project No.	GP33	Checked	Bates



1 S18 Section
1:150



① S7, S17 + S18 Section
1:200

Client: Mirvac Green Square
 Project: Green Square - Stage 3
 Avenue: Green Square
 Date: 07/11/23
 Project No.: GP33
 214

Scale: 1:200 @ A0
 Development Application

Author: Steve Watson & Partners
 Checked: Steve Watson & Partners
 Project: Green Square - Stage 3

Client: Mirvac Green Square
 Project: Green Square - Stage 3



BATESSMART
 110 Waterloo Road
 Sydney NSW 2000
 Tel: (61) 2 9211 5500
 Fax: (61) 2 9211 5501
 Email: info@batesmart.com.au
 Website: www.batesmart.com.au



ADG STORAGE SCHEDULE

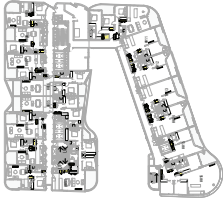
Building	Adm. Area	Storage Requirement	Storage Provision
S7	101	1,864,363	1,864,363
S7	102	1,864,363	1,864,363
S7	103	1,864,363	1,864,363
S7	104	1,864,363	1,864,363
S7	105	1,864,363	1,864,363
S7	106	1,864,363	1,864,363
S7	107	1,864,363	1,864,363
S7	108	1,864,363	1,864,363
S7	109	1,864,363	1,864,363
S7	110	1,864,363	1,864,363
S7	111	1,864,363	1,864,363
S7	112	1,864,363	1,864,363
S7	113	1,864,363	1,864,363
S7	114	1,864,363	1,864,363
S7	115	1,864,363	1,864,363
S7	116	1,864,363	1,864,363
S7	117	1,864,363	1,864,363
S7	118	1,864,363	1,864,363
S7	119	1,864,363	1,864,363
S7	120	1,864,363	1,864,363
S7	121	1,864,363	1,864,363
S7	122	1,864,363	1,864,363
S7	123	1,864,363	1,864,363
S7	124	1,864,363	1,864,363
S7	125	1,864,363	1,864,363
S7	126	1,864,363	1,864,363
S7	127	1,864,363	1,864,363
S7	128	1,864,363	1,864,363
S7	129	1,864,363	1,864,363
S7	130	1,864,363	1,864,363
S7	131	1,864,363	1,864,363
S7	132	1,864,363	1,864,363
S7	133	1,864,363	1,864,363
S7	134	1,864,363	1,864,363
S7	135	1,864,363	1,864,363
S7	136	1,864,363	1,864,363
S7	137	1,864,363	1,864,363
S7	138	1,864,363	1,864,363
S7	139	1,864,363	1,864,363
S7	140	1,864,363	1,864,363
S7	141	1,864,363	1,864,363
S7	142	1,864,363	1,864,363
S7	143	1,864,363	1,864,363
S7	144	1,864,363	1,864,363
S7	145	1,864,363	1,864,363
S7	146	1,864,363	1,864,363
S7	147	1,864,363	1,864,363
S7	148	1,864,363	1,864,363
S7	149	1,864,363	1,864,363
S7	150	1,864,363	1,864,363
S7	151	1,864,363	1,864,363
S7	152	1,864,363	1,864,363
S7	153	1,864,363	1,864,363
S7	154	1,864,363	1,864,363
S7	155	1,864,363	1,864,363
S7	156	1,864,363	1,864,363
S7	157	1,864,363	1,864,363
S7	158	1,864,363	1,864,363
S7	159	1,864,363	1,864,363
S7	160	1,864,363	1,864,363
S7	161	1,864,363	1,864,363
S7	162	1,864,363	1,864,363
S7	163	1,864,363	1,864,363
S7	164	1,864,363	1,864,363
S7	165	1,864,363	1,864,363
S7	166	1,864,363	1,864,363
S7	167	1,864,363	1,864,363
S7	168	1,864,363	1,864,363
S7	169	1,864,363	1,864,363
S7	170	1,864,363	1,864,363
S7	171	1,864,363	1,864,363
S7	172	1,864,363	1,864,363
S7	173	1,864,363	1,864,363
S7	174	1,864,363	1,864,363
S7	175	1,864,363	1,864,363
S7	176	1,864,363	1,864,363
S7	177	1,864,363	1,864,363
S7	178	1,864,363	1,864,363
S7	179	1,864,363	1,864,363
S7	180	1,864,363	1,864,363
S7	181	1,864,363	1,864,363
S7	182	1,864,363	1,864,363
S7	183	1,864,363	1,864,363
S7	184	1,864,363	1,864,363
S7	185	1,864,363	1,864,363
S7	186	1,864,363	1,864,363
S7	187	1,864,363	1,864,363
S7	188	1,864,363	1,864,363
S7	189	1,864,363	1,864,363
S7	190	1,864,363	1,864,363
S7	191	1,864,363	1,864,363
S7	192	1,864,363	1,864,363
S7	193	1,864,363	1,864,363
S7	194	1,864,363	1,864,363
S7	195	1,864,363	1,864,363
S7	196	1,864,363	1,864,363
S7	197	1,864,363	1,864,363
S7	198	1,864,363	1,864,363
S7	199	1,864,363	1,864,363
S7	200	1,864,363	1,864,363



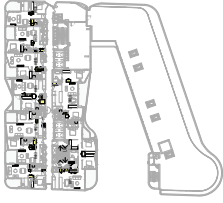
1 S07 Level 06
1:500



2 S07 Level 07
1:500



3 S07 Level 08
1:500



4 S07 Level 09
1:500



5 S07 Level 10
1:500



6 S07 Level 11-12
1:500



7 S07 Level 13
1:500



8 S07 Level 14
1:500



9 S07 Level 15-16
1:500



10 S07 Level 17
1:500



11 S07 Level 18
1:500

BATESSMART
 2027 Avenue Road
 Suite 200
 Toronto, Ontario M2M 3S7
 Tel: (416) 291-1111
 Fax: (416) 291-1112
 Email: info@batesmart.com

MIRVAC DESIGN
 1000 Bay Street
 Suite 200
 Toronto, Ontario M5G 1A5
 Tel: (416) 593-8800
 Fax: (416) 593-8801
 Email: info@mirvacdesign.com

mirvac
 1000 Bay Street
 Suite 200
 Toronto, Ontario M5G 1A5
 Tel: (416) 593-8800
 Fax: (416) 593-8801
 Email: info@mirvac.com

Client: Mirvac Green Square
Project: URBIS
Location: 1000 Bay Street, Toronto, Ontario
Architect: BatesSmart
Interior Design: Van Der Meer Consulting

Lead: AGO Storage
As indicated @ A0

Project: Green Square - Stage 3
Area: Green Square
Development: Application

Drawn by: ST AGO Storage Area Schedule
Date: 07/17/23
Project No.: GP33
Sheet No.: 831

ADG STORAGE SCHEDULE

Room No.	Description	Area (sqm)	Storage Provision
S17 01	STAIR	2,004.463	nil
S17 02	STAIR	2,004.463	nil
S17 03	STAIR	2,004.463	nil
S17 04	STAIR	2,004.463	nil
S17 05	STAIR	2,004.463	nil
S17 06	STAIR	2,004.463	nil
S17 07	STAIR	2,004.463	nil
S17 08	STAIR	2,004.463	nil
S17 09	STAIR	2,004.463	nil
S17 10	STAIR	2,004.463	nil
S17 11	STAIR	2,004.463	nil
S17 12	STAIR	2,004.463	nil
S17 13	STAIR	2,004.463	nil
S17 14	STAIR	2,004.463	nil
S17 15	STAIR	2,004.463	nil
S17 16	STAIR	2,004.463	nil
S17 17	STAIR	2,004.463	nil
S17 18	STAIR	2,004.463	nil
S17 19	STAIR	2,004.463	nil
S17 20	STAIR	2,004.463	nil
S17 21	STAIR	2,004.463	nil
S17 22	STAIR	2,004.463	nil
S17 23	STAIR	2,004.463	nil
S17 24	STAIR	2,004.463	nil
S17 25	STAIR	2,004.463	nil
S17 26	STAIR	2,004.463	nil
S17 27	STAIR	2,004.463	nil
S17 28	STAIR	2,004.463	nil
S17 29	STAIR	2,004.463	nil
S17 30	STAIR	2,004.463	nil
S17 31	STAIR	2,004.463	nil
S17 32	STAIR	2,004.463	nil
S17 33	STAIR	2,004.463	nil
S17 34	STAIR	2,004.463	nil
S17 35	STAIR	2,004.463	nil
S17 36	STAIR	2,004.463	nil
S17 37	STAIR	2,004.463	nil
S17 38	STAIR	2,004.463	nil
S17 39	STAIR	2,004.463	nil
S17 40	STAIR	2,004.463	nil
S17 41	STAIR	2,004.463	nil
S17 42	STAIR	2,004.463	nil
S17 43	STAIR	2,004.463	nil
S17 44	STAIR	2,004.463	nil
S17 45	STAIR	2,004.463	nil
S17 46	STAIR	2,004.463	nil
S17 47	STAIR	2,004.463	nil
S17 48	STAIR	2,004.463	nil
S17 49	STAIR	2,004.463	nil
S17 50	STAIR	2,004.463	nil
S17 51	STAIR	2,004.463	nil
S17 52	STAIR	2,004.463	nil
S17 53	STAIR	2,004.463	nil
S17 54	STAIR	2,004.463	nil
S17 55	STAIR	2,004.463	nil
S17 56	STAIR	2,004.463	nil
S17 57	STAIR	2,004.463	nil
S17 58	STAIR	2,004.463	nil
S17 59	STAIR	2,004.463	nil
S17 60	STAIR	2,004.463	nil
S17 61	STAIR	2,004.463	nil
S17 62	STAIR	2,004.463	nil
S17 63	STAIR	2,004.463	nil
S17 64	STAIR	2,004.463	nil
S17 65	STAIR	2,004.463	nil
S17 66	STAIR	2,004.463	nil
S17 67	STAIR	2,004.463	nil
S17 68	STAIR	2,004.463	nil
S17 69	STAIR	2,004.463	nil
S17 70	STAIR	2,004.463	nil
S17 71	STAIR	2,004.463	nil
S17 72	STAIR	2,004.463	nil
S17 73	STAIR	2,004.463	nil
S17 74	STAIR	2,004.463	nil
S17 75	STAIR	2,004.463	nil
S17 76	STAIR	2,004.463	nil
S17 77	STAIR	2,004.463	nil
S17 78	STAIR	2,004.463	nil
S17 79	STAIR	2,004.463	nil
S17 80	STAIR	2,004.463	nil
S17 81	STAIR	2,004.463	nil
S17 82	STAIR	2,004.463	nil
S17 83	STAIR	2,004.463	nil
S17 84	STAIR	2,004.463	nil
S17 85	STAIR	2,004.463	nil
S17 86	STAIR	2,004.463	nil
S17 87	STAIR	2,004.463	nil
S17 88	STAIR	2,004.463	nil
S17 89	STAIR	2,004.463	nil
S17 90	STAIR	2,004.463	nil
S17 91	STAIR	2,004.463	nil
S17 92	STAIR	2,004.463	nil
S17 93	STAIR	2,004.463	nil
S17 94	STAIR	2,004.463	nil
S17 95	STAIR	2,004.463	nil
S17 96	STAIR	2,004.463	nil
S17 97	STAIR	2,004.463	nil
S17 98	STAIR	2,004.463	nil
S17 99	STAIR	2,004.463	nil
S17 100	STAIR	2,004.463	nil



1 S17 Level 02 - Storage
1:200



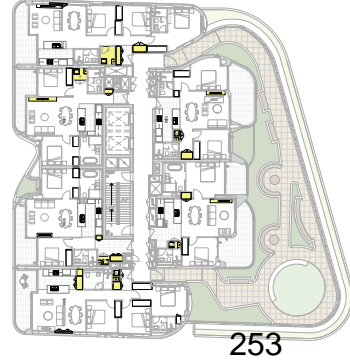
2 S17 Level 03 - Storage
1:200



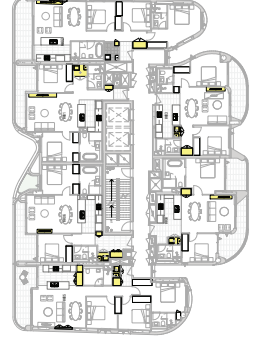
3 S17 Level 04 - Storage
1:200



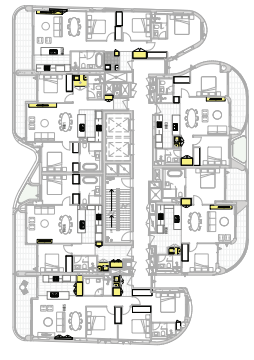
4 S17 Level 05 - Storage
1:200



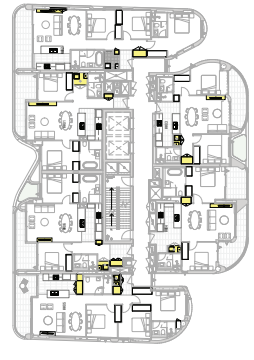
5 S17 Level 06 - Storage
1:200



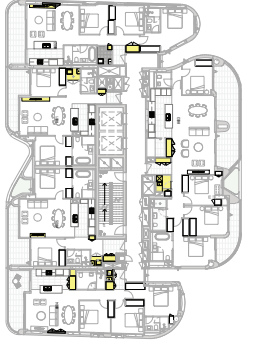
6 S17 Level 07 - Storage
1:200



7 S17 Level 08 - Storage
1:200



8 S17 Level 09 - Storage
1:200



9 S17 Level 10-12 - Storage
1:200



10 S17 Level 13 - Storage
1:200

ADG STORAGE SCHEDULE

Building	Apartment	Storage Requirement	Storage Provision
518	207	2,264.432	4047
518	208	2,264.432	4047
518	209	2,264.432	4047
518	210	2,264.432	4047
518	211	2,264.432	4047
518	212	2,264.432	4047
518	213	2,264.432	4047
518	214	2,264.432	4047
518	215	2,264.432	4047
518	216	2,264.432	4047
518	217	2,264.432	4047
518	218	2,264.432	4047
518	219	2,264.432	4047
518	220	2,264.432	4047
518	221	2,264.432	4047
518	222	2,264.432	4047
518	223	2,264.432	4047
518	224	2,264.432	4047
518	225	2,264.432	4047
518	226	2,264.432	4047
518	227	2,264.432	4047
518	228	2,264.432	4047
518	229	2,264.432	4047
518	230	2,264.432	4047
518	231	2,264.432	4047
518	232	2,264.432	4047
518	233	2,264.432	4047
518	234	2,264.432	4047
518	235	2,264.432	4047
518	236	2,264.432	4047
518	237	2,264.432	4047
518	238	2,264.432	4047
518	239	2,264.432	4047
518	240	2,264.432	4047
518	241	2,264.432	4047
518	242	2,264.432	4047
518	243	2,264.432	4047
518	244	2,264.432	4047
518	245	2,264.432	4047
518	246	2,264.432	4047
518	247	2,264.432	4047
518	248	2,264.432	4047
518	249	2,264.432	4047
518	250	2,264.432	4047
518	251	2,264.432	4047
518	252	2,264.432	4047
518	253	2,264.432	4047
518	254	2,264.432	4047
518	255	2,264.432	4047
518	256	2,264.432	4047
518	257	2,264.432	4047
518	258	2,264.432	4047
518	259	2,264.432	4047
518	260	2,264.432	4047
518	261	2,264.432	4047
518	262	2,264.432	4047
518	263	2,264.432	4047
518	264	2,264.432	4047
518	265	2,264.432	4047
518	266	2,264.432	4047
518	267	2,264.432	4047
518	268	2,264.432	4047
518	269	2,264.432	4047
518	270	2,264.432	4047
518	271	2,264.432	4047
518	272	2,264.432	4047
518	273	2,264.432	4047
518	274	2,264.432	4047
518	275	2,264.432	4047
518	276	2,264.432	4047
518	277	2,264.432	4047
518	278	2,264.432	4047
518	279	2,264.432	4047
518	280	2,264.432	4047
518	281	2,264.432	4047
518	282	2,264.432	4047
518	283	2,264.432	4047
518	284	2,264.432	4047
518	285	2,264.432	4047
518	286	2,264.432	4047
518	287	2,264.432	4047
518	288	2,264.432	4047
518	289	2,264.432	4047
518	290	2,264.432	4047
518	291	2,264.432	4047
518	292	2,264.432	4047
518	293	2,264.432	4047
518	294	2,264.432	4047
518	295	2,264.432	4047
518	296	2,264.432	4047
518	297	2,264.432	4047
518	298	2,264.432	4047
518	299	2,264.432	4047
518	300	2,264.432	4047
518	301	2,264.432	4047
518	302	2,264.432	4047
518	303	2,264.432	4047
518	304	2,264.432	4047
518	305	2,264.432	4047
518	306	2,264.432	4047
518	307	2,264.432	4047
518	308	2,264.432	4047
518	309	2,264.432	4047
518	310	2,264.432	4047
518	311	2,264.432	4047
518	312	2,264.432	4047
518	313	2,264.432	4047
518	314	2,264.432	4047
518	315	2,264.432	4047
518	316	2,264.432	4047
518	317	2,264.432	4047
518	318	2,264.432	4047
518	319	2,264.432	4047
518	320	2,264.432	4047
518	321	2,264.432	4047
518	322	2,264.432	4047
518	323	2,264.432	4047
518	324	2,264.432	4047
518	325	2,264.432	4047
518	326	2,264.432	4047
518	327	2,264.432	4047
518	328	2,264.432	4047
518	329	2,264.432	4047
518	330	2,264.432	4047
518	331	2,264.432	4047
518	332	2,264.432	4047
518	333	2,264.432	4047
518	334	2,264.432	4047
518	335	2,264.432	4047
518	336	2,264.432	4047
518	337	2,264.432	4047
518	338	2,264.432	4047
518	339	2,264.432	4047
518	340	2,264.432	4047
518	341	2,264.432	4047
518	342	2,264.432	4047
518	343	2,264.432	4047
518	344	2,264.432	4047
518	345	2,264.432	4047
518	346	2,264.432	4047
518	347	2,264.432	4047
518	348	2,264.432	4047
518	349	2,264.432	4047
518	350	2,264.432	4047

7 LEVEL 07 - Storage
1:200

2 LEVEL 13-14 - Storage
1:200

6 LEVEL 06 - Storage
1:200

1 LEVEL 11-12 - Storage
1:200

5 LEVEL 05 - Storage
1:200

10 LEVEL 10 - Storage
1:200

4 LEVEL 04 - Storage
1:200

9 LEVEL 09 - Storage
1:200

3 LEVEL 03 - Storage
1:200

8 LEVEL 08 - Storage
1:200

15 LEVEL 20 - Storage
1:200

14 LEVEL 19 - Storage
1:200

13 LEVEL 18 - Storage
1:200

12 LEVEL 17 - Storage
1:200

11 LEVEL 15-16 - Storage
1:200

BATESSMART

1111 North Main Street
Suite 200
St. Louis, MO 63103

MIRVAC DESIGN

1111 North Main Street
Suite 200
St. Louis, MO 63103

mirvac

1111 North Main Street
Suite 200
St. Louis, MO 63103

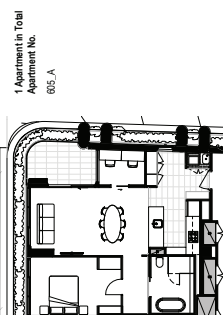
Client: Mirvac
Project: Green Square - Stage 3 - Site 18
Area: A000

Design: Mirvac
Drawn: Mirvac
Checked: Mirvac

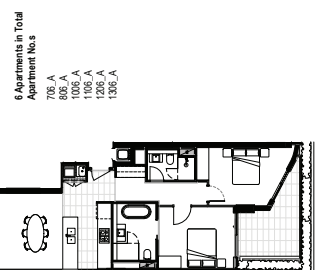
Date: 07/11/23
Project No: GP33
Drawn: Mirvac

Level: A00 Storage

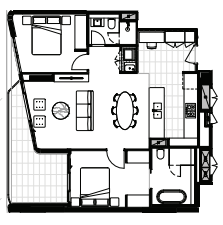
As indicated @ A0



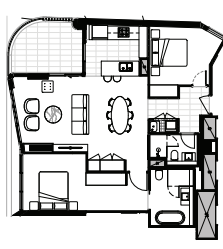
7 Adaptable Unit Type 1 (Pre)
1:100



5 Adaptable Unit Type 2 (Pre)
1:100



1 Adaptable Unit Type 3 (Pre)
1:100



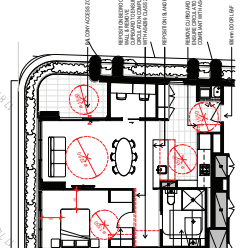
3 Adaptable Unit Type 4 (Pre)
1:100

3 Apartments in Total
Apartment No.s
1407_A
1507_A
1607_A

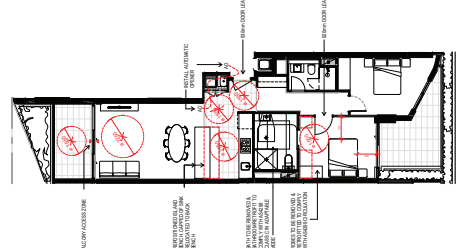
3 Apartments in Total
Apartment No.s
1406_A
1506_A
1606_A

6 Apartments in Total
Apartment No.s
705_A
805_A
1005_A
1205_A
1305_A

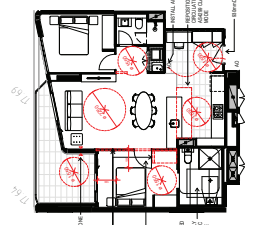
1 Apartment in Total
Apartment No.
805_A



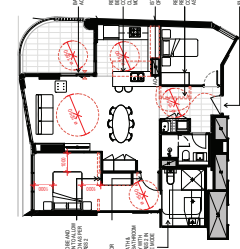
8 Adaptable Unit Type 1 (Post)
1:100



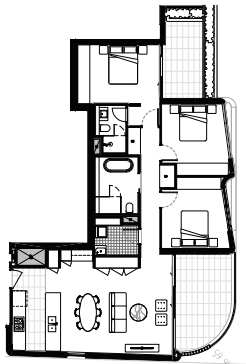
6 Adaptable Unit Type 2 (Post)
1:100



2 Adaptable Unit Type 3 (Post)
1:100

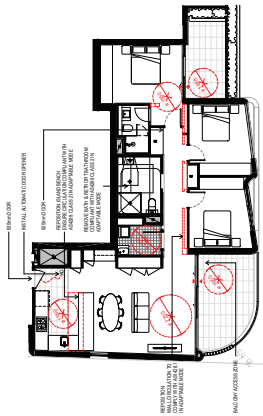


4 Adaptable Unit Type 4 (Post)
1:100

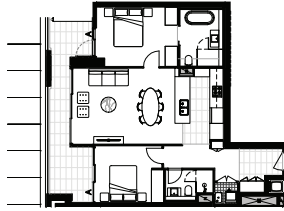


12 Apartments in Total
Apartment Nos.
701 A
801 A
901 A
1001 A
1101 A
1201 A
1301 A
1401 A
1501 A
1601 A
1701 A
1801 A

5 Adaptable Unit Type 5 (Pre)
1:100

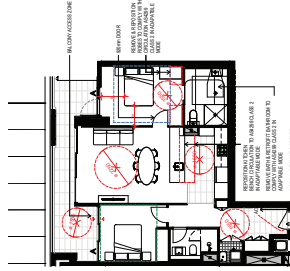


6 Adaptable Unit Type 5 (Post)
1:100

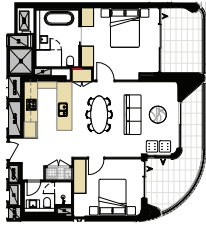


8 Apartments in Total
Apartment Nos.
204 A
304 A
404 A
504 A
604 A
704 A
804 A
904 A

1 Adaptable Unit Type 6 (Pre)
1:100

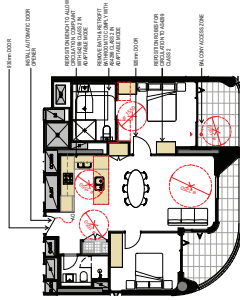


3 Adaptable Unit Type 6 (Post)
1:100

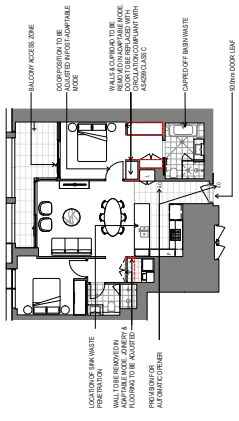


4 Apartments in Total
Apartment Nos.
604 A
704 A
804 A
904 A

2 Adaptable Unit Type 7 (Pre)
1:100



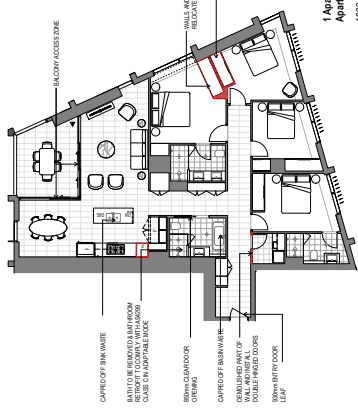
4 Adaptable Unit Type 7 (Post)
1:100



8 Apartments in Total
Apartment Nos

- 303_A
- 403_A
- 503_A
- 603_A
- 703_A
- 803_A
- 903_A
- 1003_A

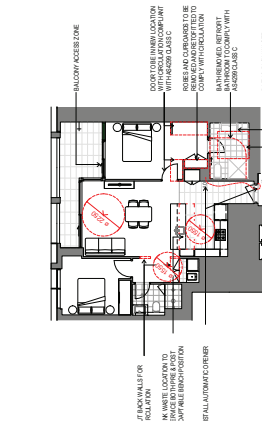
1 2 Bed Pre-Adaptation
1:100



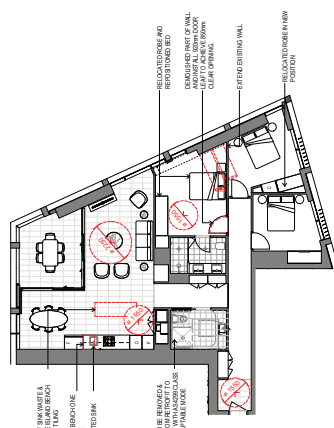
1 Apartment in Total
Apartment No.

1803_A

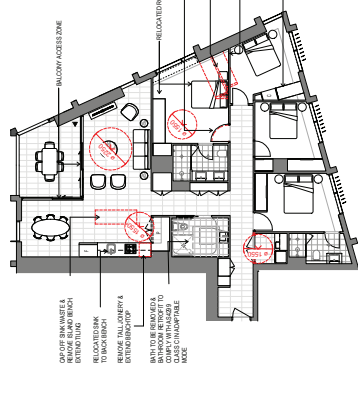
5 4 Bed Pre-Adaptation
1:100



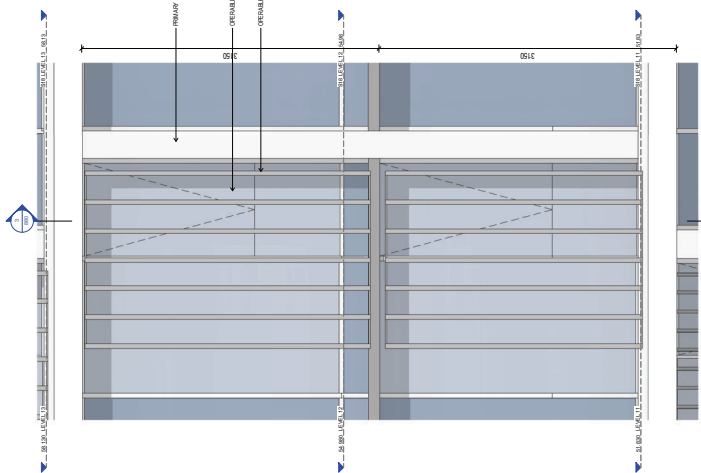
2 3 Bed Post-Adaptation
1:100



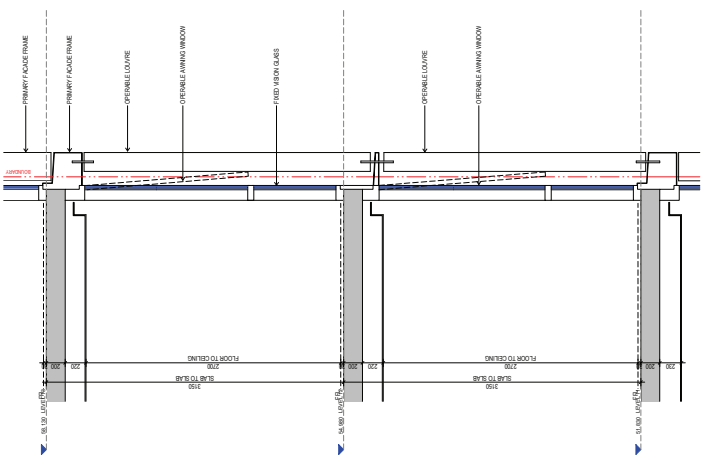
4 3 Bed Pre-Adaptation
1:100



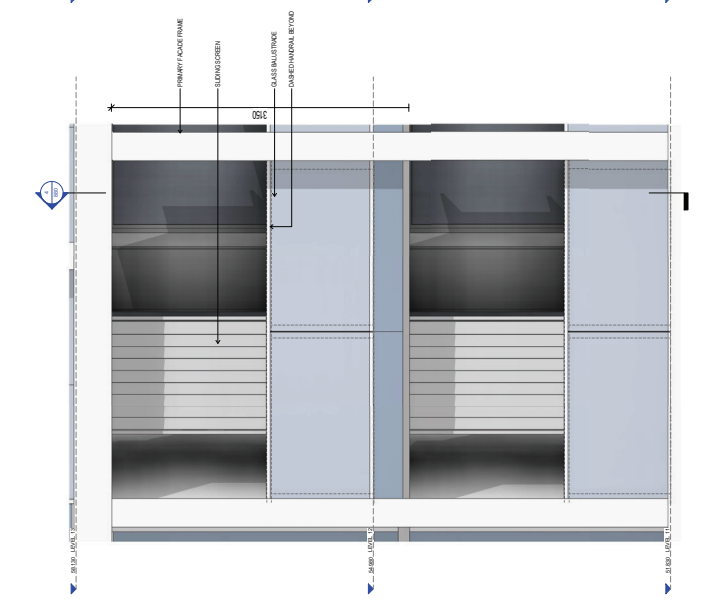
6 4 Bed Post-Adaptation
1:100



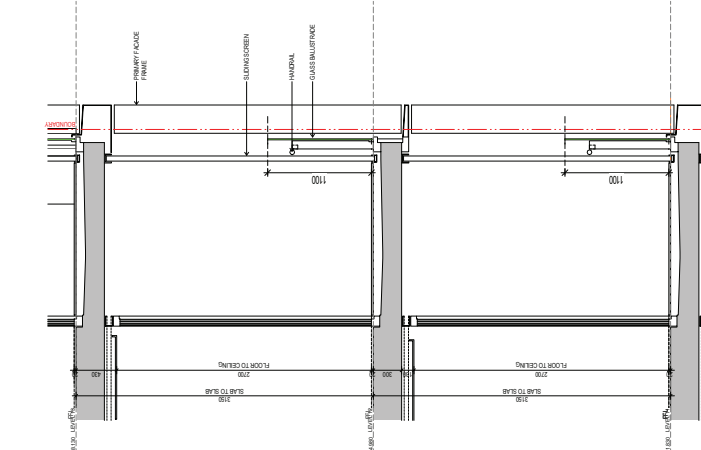
② FACADE DETAIL - OPERABLE LOUVRE - ELEVATION
1:20



③ FACADE DETAIL - OPERABLE LOUVRE - SECTION
1:20



① FACADE DETAIL - SLIDING SCREEN - ELEVATION
1:20



④ FACADE DETAIL - SLIDING SCREEN - SECTION
1:20

<p style="text-align: right;">Office Use Only</p> <p>Registered:</p> <p>Title System:</p>	<p>Office Use Only</p> <h1 style="margin: 0;">DRAFT</h1> <p style="margin: 0;">REVISION [01] DATE:26/02/2024</p>
---	--

<p>PLAN OF PROPOSED SUBDIVISION OF LOT 6 IN DP1199427</p>	<p>LGA: SYDNEY</p> <p>Locality: ZETLAND</p> <p>Parish: ALEXANDRIA</p> <p>County: CUMBERLAND</p>
--	---

<p style="text-align: center;">Survey Certificate</p> <p>I, TASY MORAITIS of CRAIG & RHODES PTY LTD a surveyor registered under the <i>Surveying and Spatial Information Act 2002</i>, certify that:</p> <p>*(a) The land shown in the plan was surveyed in accordance with the <i>Surveying and Spatial Information Regulation 2017</i>, is accurate and the survey was completed on , or</p> <p>*(b) The part of the land shown in the plan(*being/*excluding **.....) was surveyed in accordance with the <i>Surveying and Spatial Information Regulation 2017</i>, the part surveyed is accurate and the survey was completed on, the part not surveyed was compiled in accordance with that Regulation, or</p> <p>*(c) The land shown in this plan was compiled in accordance with the <i>Surveying and Spatial Information Regulation 2017</i>.</p> <p>Datum Line:</p> <p>Type: *Urban/*Rural</p> <p>The terrain is *Level-Undulating / *Steep-Mountainous</p> <p>Signature:Dated:</p> <p>Surveyor Identification No: 1652 Surveyor registered under the <i>Surveying and Spatial Information Act 2002</i></p> <p>*Strike out inappropriate words.</p> <p>**Specify the land actually surveyed or specify any land shown in the plan that is not the subject of the survey.</p>	<p style="text-align: center;">Crown Lands NSW/Western Lands Office Approval</p> <p>I, (Authorised Officer) in approving this plan certify that all necessary approvals in regard to the allocation of the land shown herein have been given.</p> <p>Signature:</p> <p>Date:</p> <p>File Number:</p> <p>Office:</p>
--	--

<p style="text-align: center;">Subdivision Certificate</p> <p>I, *Authorised Person/*General Manager/*Registered Certifier, certify that the provisions of s.6.15 of the <i>Environmental Planning and Assessment Act 1979</i> have been satisfied in relation to the proposed subdivision, new road or reserve set out herein.</p> <p>Signature:</p> <p>Registration number:</p> <p>Consent Authority:</p> <p>Date of endorsement:</p> <p>Subdivision Certificate number:</p> <p>File number:</p> <p>*Strike through if inapplicable.</p>	<p style="text-align: center;">Subdivision Certificate</p> <p>I, *Authorised Person/*General Manager/*Registered Certifier, certify that the provisions of s.6.15 of the <i>Environmental Planning and Assessment Act 1979</i> have been satisfied in relation to the proposed subdivision, new road or reserve set out herein.</p> <p>Signature:</p> <p>Registration number:</p> <p>Consent Authority:</p> <p>Date of endorsement:</p> <p>Subdivision Certificate number:</p> <p>File number:</p> <p>*Strike through if inapplicable.</p>
---	---

<p>Plans used in the preparation of survey/compilation.</p>	<p>Statements of intention to dedicate public roads create public reserves and drainage reserves, acquire/resume land.</p>
---	--

<p>Surveyor's Reference: 661-22 DSUB-TM</p>	<p>Signatures, Seals and Section 88B Statements should appear on PLAN FORM 6A</p>
---	---

Office Use Only

Office Use Only

Registered:

DRAFT

REVISION [01] DATE:26/02/2024

**PLAN OF
PROPOSED SUBDIVISION OF LOT 6 IN
DP1199427**

- This sheet is for the provision of the following information as required:
- A schedule of lots and addresses - See 60(c) *SSI Regulation 2017*
 - Statements of intention to create and release affecting interests in accordance with section 88B *Conveyancing Act 1919*
 - Signatures and seals- see 195D *Conveyancing Act 1919*
 - Any information which cannot fit in the appropriate panel of sheet 1 of the administration sheets.

Subdivision Certificate number:
Date of Endorsement:

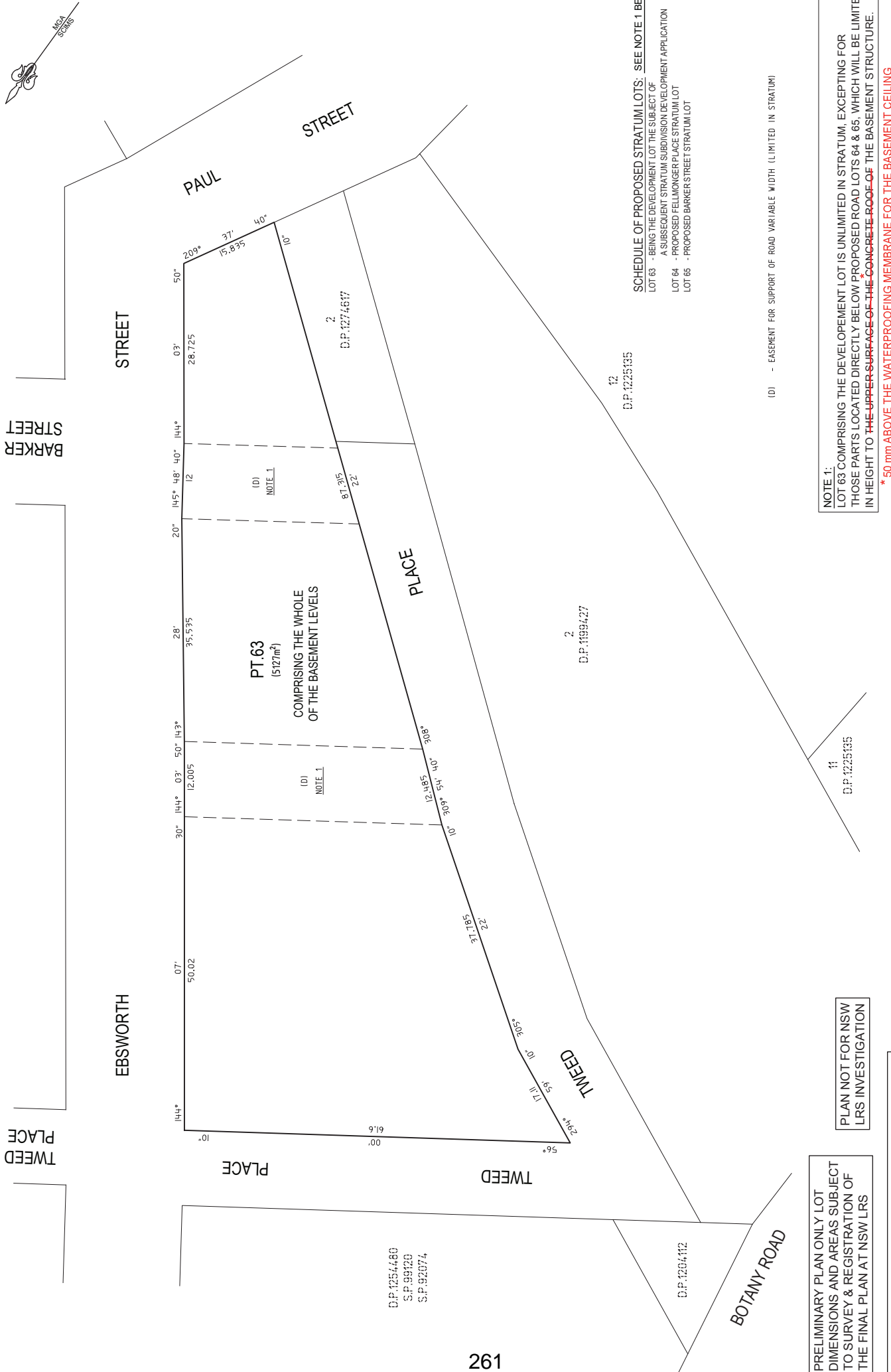
PURSUANT TO SECTION 88B OF THE CONVEYANCING ACT 1919 AS AMENDED AND IN TERMS OF THE ACCOMPANYING INSTRUMENT IT IS INTENDED TO CREATE: -

- ~~1. EASEMENT FOR OVERHANG VARIABLE WIDTH (C) (LIMITED IN STRATUM)~~
2. EASEMENT FOR SUPPORT OF ROAD VARIABLE WIDTH (D) (LIMITED IN STRATUM)
3. POSITIVE COVENANT FOR ROAD SUPPORT

If space is insufficient use additional annexure sheet

Surveyor's Reference: 661-22 DSUB-TM

BASEMENT LEVEL 1 & ABOVE



PRELIMINARY PLAN ONLY LOT DIMENSIONS AND AREAS SUBJECT TO SURVEY & REGISTRATION OF THE FINAL PLAN AT NSW LRS

PROPOSED EASEMENT LOCATIONS ARE INDICATIVE ONLY & SUBJECT TO DEVELOPMENT CONSENT, DETAILED DESIGN, CONSTRUCTION, SURVEY & REGISTRATION OF THE FINAL PLAN AT NSW LRS

PLAN NOT FOR NSW LRS INVESTIGATION

SURVEYOR
Name: TASY MORAITIS
Collins International Engineering & Design NSW
Date:
Reference: 661-22 DSUB-TM

PLAN OF
PROPOSED SUBDIVISION OF LOT 6 IN DP1199427

LGA: SYDNEY
Locality: ZETLAND
Reduction Ratio: 1: 400
Lengths are in metres

Registered

D.P. DRAFT
REVISION [01] DATE: 26/02/2024

NOTE 1:
LOT 63 COMPRISING THE DEVELOPEMENT LOT IS UNLIMITED IN STRATUM, EXCEPTING FOR THOSE PARTS LOCATED DIRECTLY BELOW PROPOSED ROAD LOTS 64 & 65, WHICH WILL BE LIMITED IN HEIGHT TO THE UPPER SURFACE OF THE CONCRETE ROOF OF THE BASEMENT STRUCTURE.
* 50 mm ABOVE THE WATERPROOFING MEMBRANE FOR THE BASEMENT CEILING

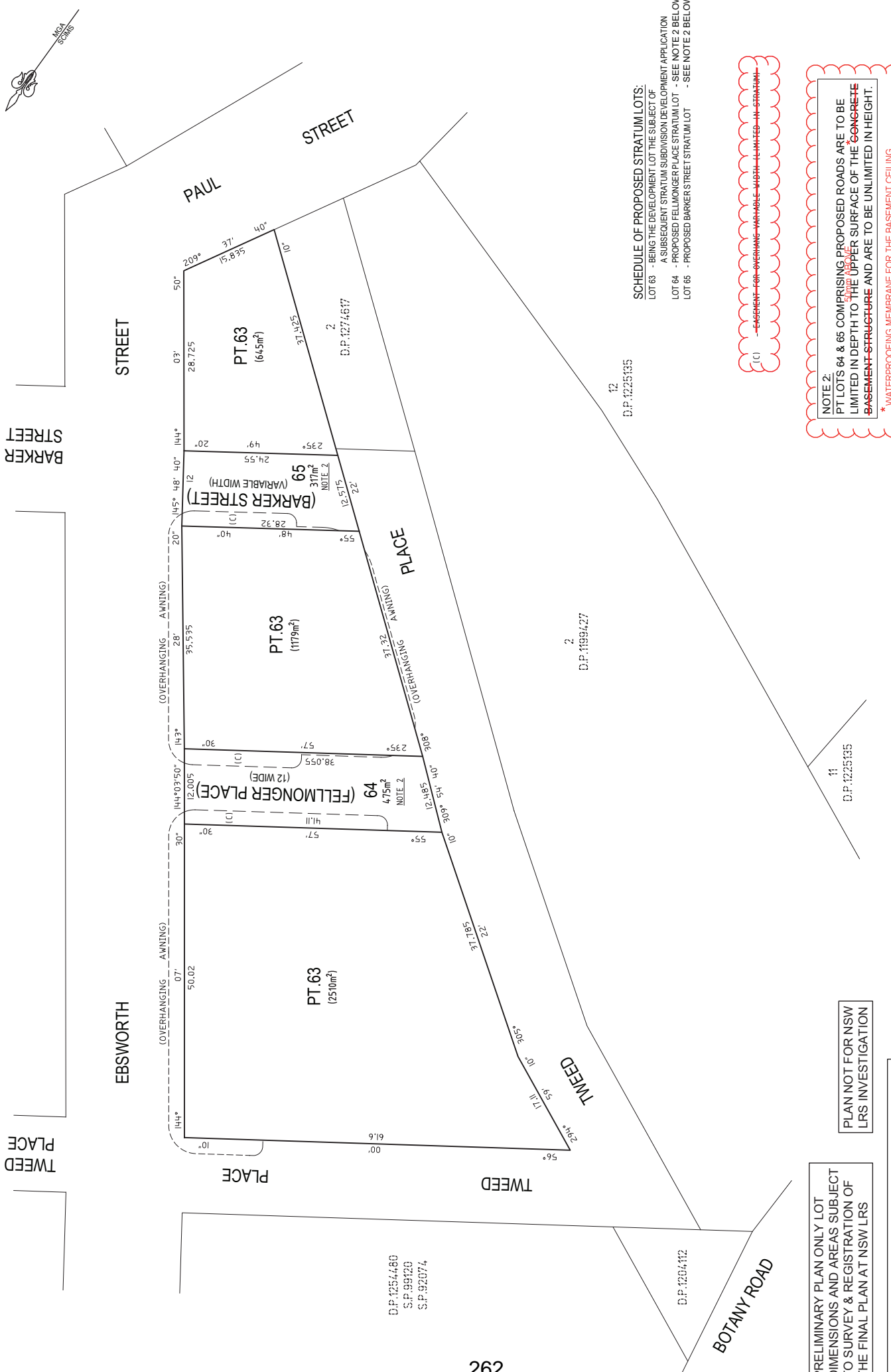
SCHEDULE OF PROPOSED STRATUM LOTS: SEE NOTE 1 BELOW
LOT 63 - BEING THE DEVELOPMENT LOT THE SUBJECT OF A SUBSEQUENT STRATUM SUBDIVISION DEVELOPMENT APPLICATION
LOT 64 - PROPOSED FELLMONGER PLACE STRATUM LOT
LOT 65 - PROPOSED BARKER STREET STRATUM LOT

(D) - EASEMENT FOR SUPPORT OF ROAD VARIABLE WIDTH (LIMITED IN STRATUM)

WARNING: CREASING OR FOLDING WILL LEAD TO REJECTION

PLAN FORM 2 (A2)

LEVEL 1 & ABOVE



<p>SURVEYOR Name: TASY MORAITIS Collins International Engineering & Design NSW Date: Reference: 661-22 DSUB-TM</p>	<p>PLAN OF PROPOSED SUBDIVISION OF LOT 6 IN DP1199427</p>	<p>LGA: SYDNEY Registered Locality: ZETLAND Reduction Ratio: 1: 400 Lengths are in metres</p>	<p>D.P. DRAFT REVISION [01] DATE: 26/02/2024</p>
--	---	---	---

SCHEDULE OF PROPOSED STRATUM LOTS:
 LOT 63 - BEING THE DEVELOPMENT LOT THE SUBJECT OF
 A SUBSEQUENT STRATUM SUBDIVISION DEVELOPMENT APPLICATION
 LOT 64 - PROPOSED FELLMONGER PLACE STRATUM LOT - SEE NOTE 2 BELOW
 LOT 65 - PROPOSED BARKER STREET STRATUM LOT - SEE NOTE 2 BELOW

(C) - ~~EASEMENT FOR OVERHANGING ANNING - WIDTH UNLIMITED - IN STRATUM~~

NOTE 2:
 PT LOTS 64 & 65 COMPRISING PROPOSED ROADS ARE TO BE LIMITED IN DEPTH TO THE UPPER SURFACE OF THE CONCRETE BASEMENT STRUCTURE AND ARE TO BE UNLIMITED IN HEIGHT.
 * WATERPROOFING MEMBRANE FOR THE BASEMENT CEILING

PLAN NOT FOR NSW LRS INVESTIGATION

PRELIMINARY PLAN ONLY LOT DIMENSIONS AND AREAS SUBJECT TO SURVEY & REGISTRATION OF THE FINAL PLAN AT NSW LRS

PROPOSED EASEMENT LOCATIONS ARE INDICATIVE ONLY & SUBJECT TO DEVELOPMENT CONSENT, DETAILED DESIGN, CONSTRUCTION, SURVEY & REGISTRATION OF THE FINAL PLAN AT NSW LRS

CAD REF: G:\Inquiry\CR\Projects\2022\1661-22 Green Square Stage 3\Survey\Plans\Plan_661-22 DSUB-TM.DWG - A.K.F. - T.M.